



SOLENOID VALVE

(NORMAL CLOSED TYPE)
-WITH EMERGENCY (Φ12.7)

SOLENOID VALVE

(NORMAL CLOSED TYPE)
-WITH EMERGENCY (Φ12.7)



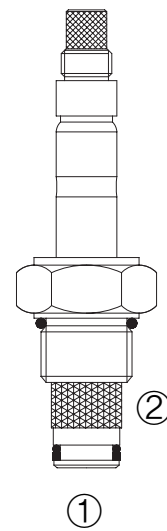
DESCRIPTION

A solenoid-operated, 2-way, normally closed, poppet-type, screw-in hydraulic cartridge valve, intended to act as a blocking or load-holding device for low flow circuits.

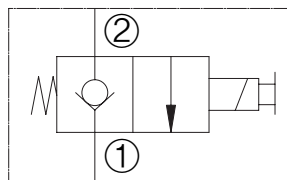
OPERATION

When de-energized, the valve acts as a check valve allowing oil flow only from port ① to port ②, When energized the oil flow is possible from port ② to ① and is restricted from ① to ②.

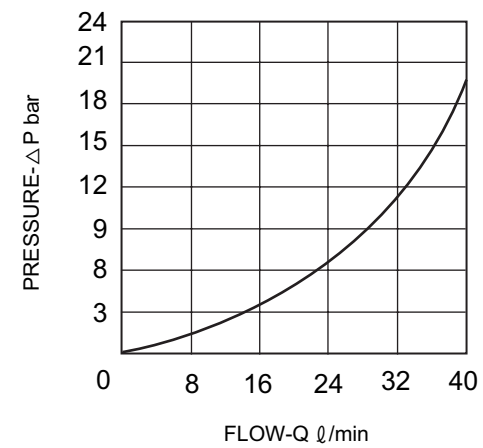
To operate the manual override turn the round knob counterclockwise; to reset the valve for normal operation turn the knob clockwise.



SYMBOL



PERFORMANCE



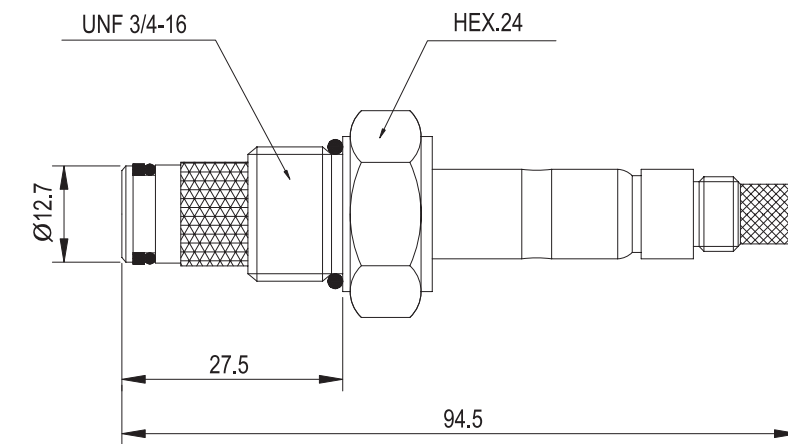
FEATURES

- Ⓐ Continuous-duty rated coil.
- Ⓑ Hardened seat for long life and low leakage.
- Ⓒ Optional coil voltages and terminations.
- Ⓓ Compact size.
- Ⓔ Cartridges are voltage interchangeable.

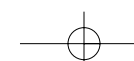
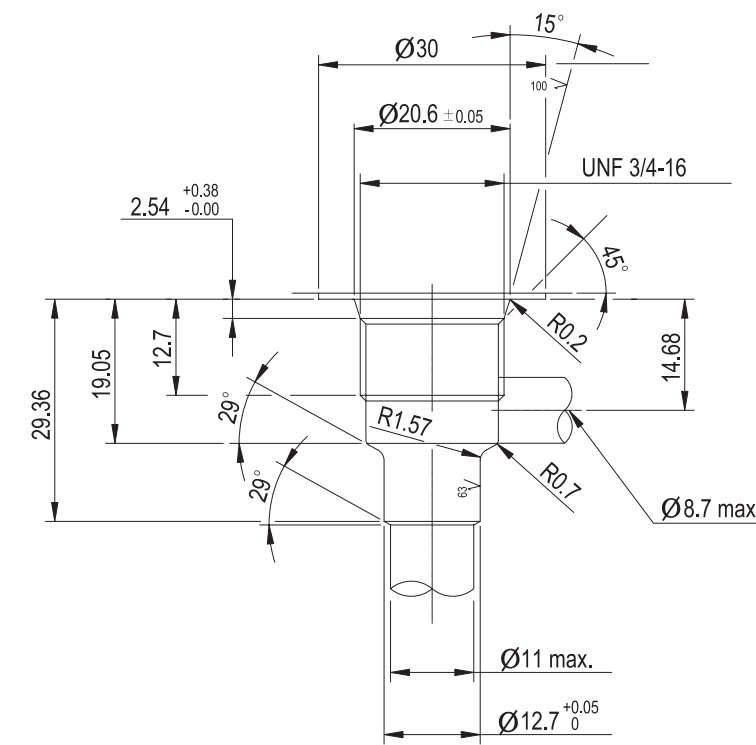
RATINGS

- External valve surface are zinc coated
- Operating Pressure : 280 bar max.
- Flow : 40 l/min max.
- Filtration : 280 micron or better
- Coil must be ordered separately

DIMENSIONS



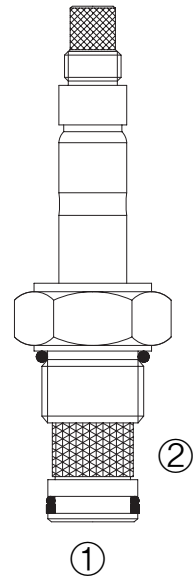
CAVITY





SOLENOID VALVE (NORMAL CLOSED TYPE) - WITHOUT EMERGENCY

SOLENOID VALVE (NORMAL CLOSED TYPE) - WITHOUT EMERGENCY



DESCRIPTION

solenoid-operated, 2-way, normally closed, poppet-type, screw-in hydraulic cartridge valve, intended to act as a blocking or load-holding device for low flow circuits.

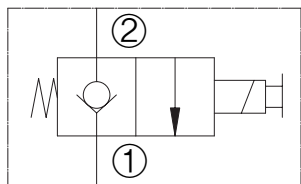
OPERATION

When de-energized, the valve acts as a check valve allowing oil flow only from port ① to port ②.

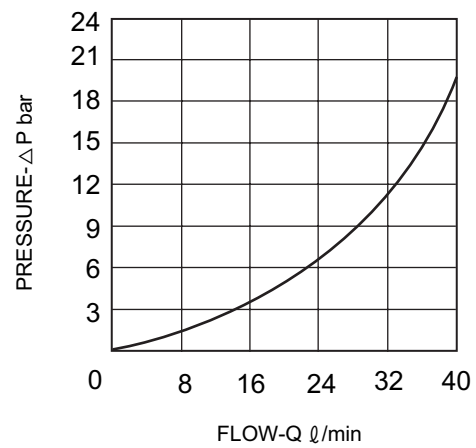
When energized the oil flow is possible from port ② to ① and is restricted from ① to ②.

To operate the manual override turn the round knob counterclockwise; to reset the valve for normal operation turn the knob clockwise.

SYMBOL



PERFORMANCE



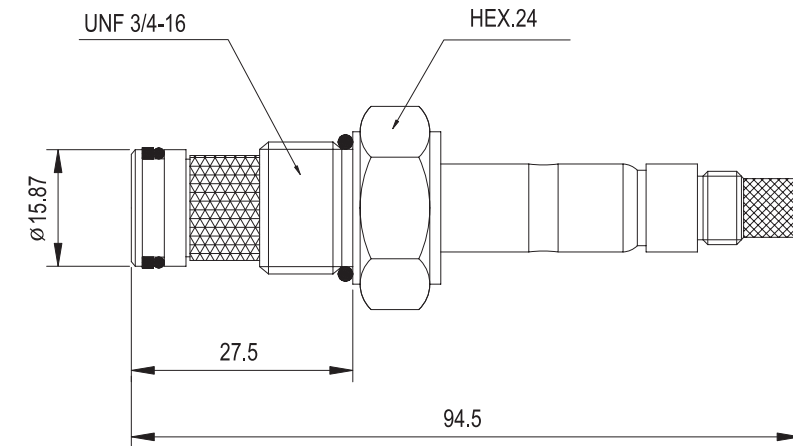
FEATURES

- Ⓐ Continuous-duty rated coil.
- Ⓑ Hardened seat for long life and low leakage.
- Ⓒ Optional coil voltages and terminations.
- Ⓓ Compact size.
- Ⓔ Cartridges are voltage interchangeable.

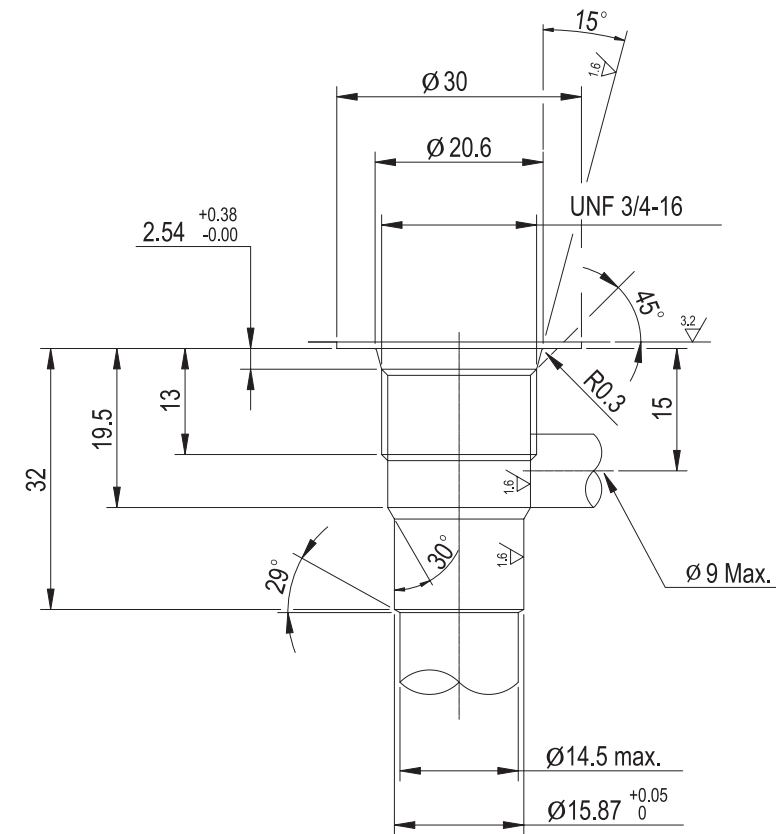
RATINGS

- External valve surface are zinc coated
- Operating Pressure : 280 bar max.
- Flow : 40 l/min max.
- Filtration : 280 micron or better
- Coil must be ordered separately

DIMENSIONS



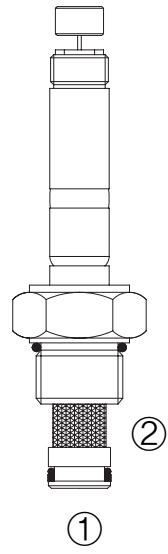
CAVITY





SOLENOID VALVE (NORMAL OPEN TYPE)

SOLENOID VALVE (NORMAL OPEN TYPE)



DESCRIPTION

Cartridge valves, two way, normally open poppet style DC solenoid operated. Leak proof design.

OPERATION

When de-energized the valve acts as a check valve allowing oil flow only from port ② to port ①. When energized, the poppet lowers, blocking flow from port ② to port ① and allowing flow from port ① to port ② after overcoming the coil force.

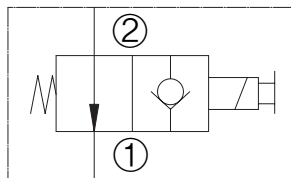
FEATURES

- Ⓐ Continuous-duty rated coil.
- Ⓑ Hardened seat for long life and low leakage.
- Ⓒ Optional coil voltages and terminations.
- Ⓓ Compact size.
- Ⓔ Cartridges are voltage interchangeable.

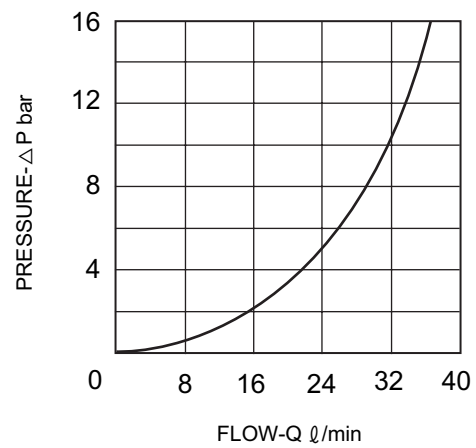
RATINGS

- External valve surface are zinc coated
- Operating Pressure : 280 bar max.
- Flow : 30 l/min max.
- Filtration : 280 micron or better
- Coil must be ordered separately

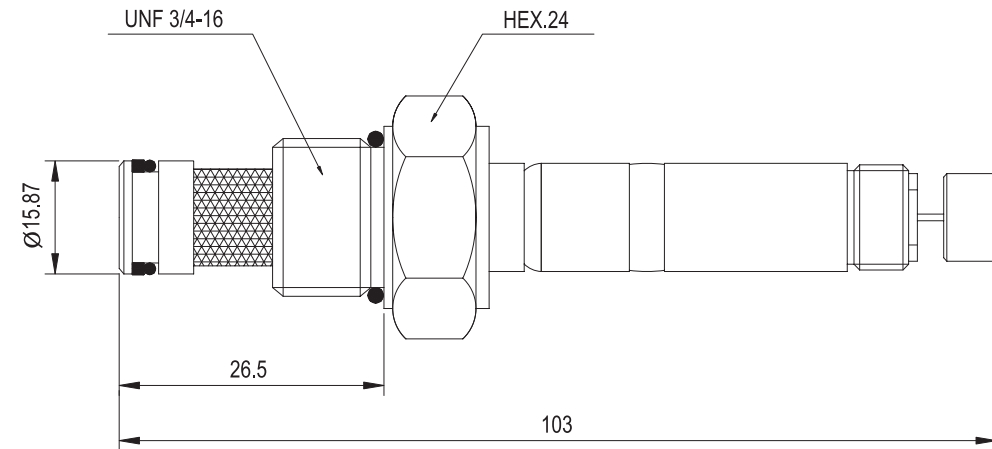
SYMBOL



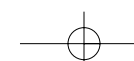
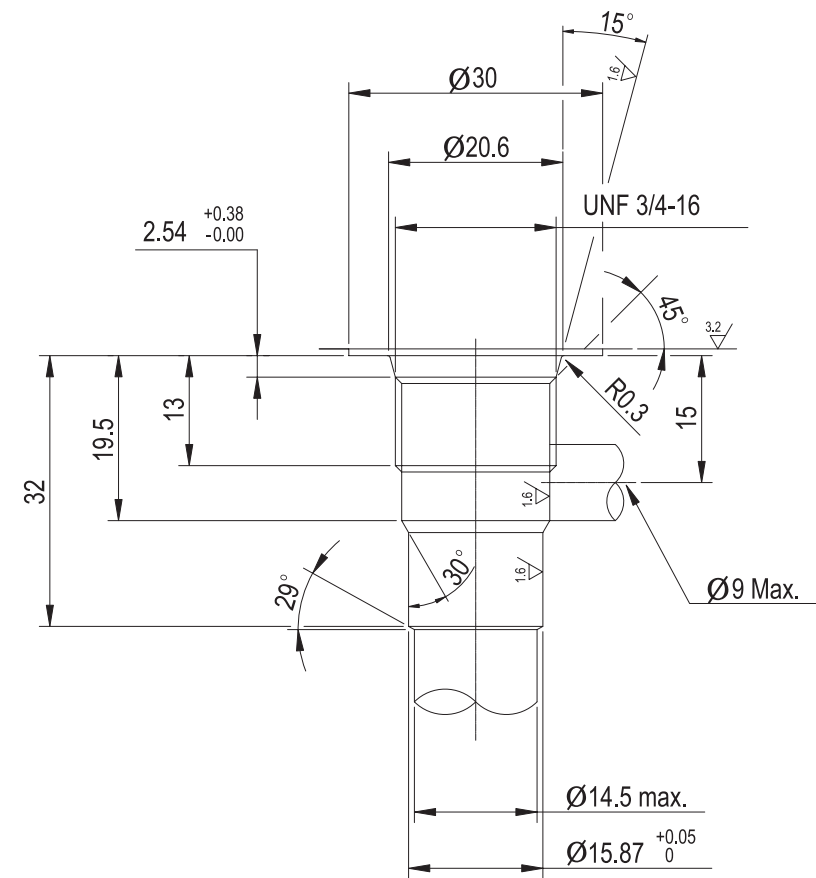
PERFORMANCE



DIMENSIONS



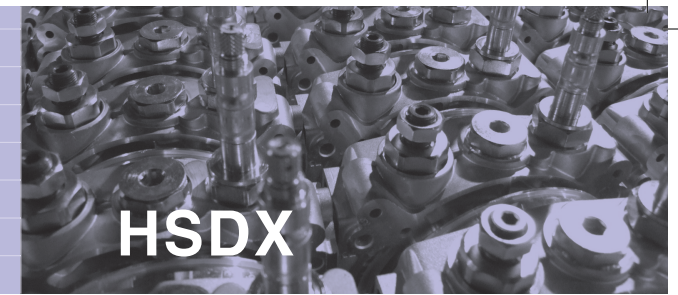
CAVITY





SOLENOID VALVE (DOUBLE LOCK TYPE)

SOLENOID VALVE (DOUBLE LOCK TYPE)

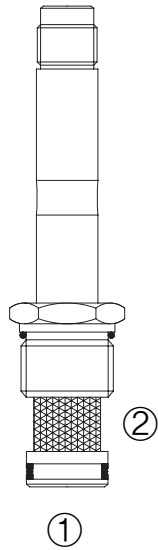


DESCRIPTION

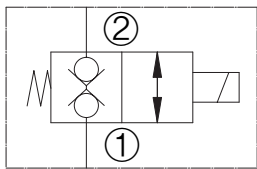
The consist of normally closed direct acting double lock solenoid cartridge valves.

OPERATION

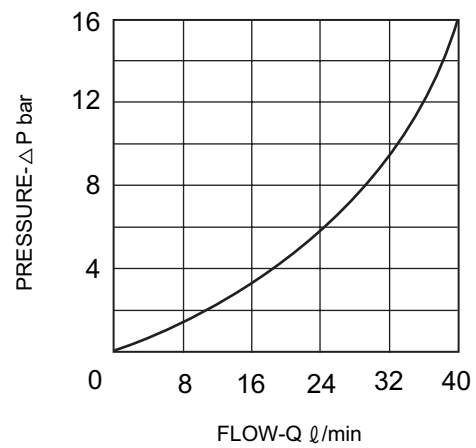
When de-energized, the Code acts as a check valve, allowing flow from ① to ②, while blocking flow from ② to ①. When energized, the cartridge's poppet lifts to open the ② to ① flow path. In thos mode, flow from ① to ② is severly restricted.



SYMBOL



PERFORMANCE



FEATURES

- a) Continuous-duty rated coil.
- b) Hardened seat for long life and low leakage.
- c) Optional coil voltages and terminations.
- d) Compact size.

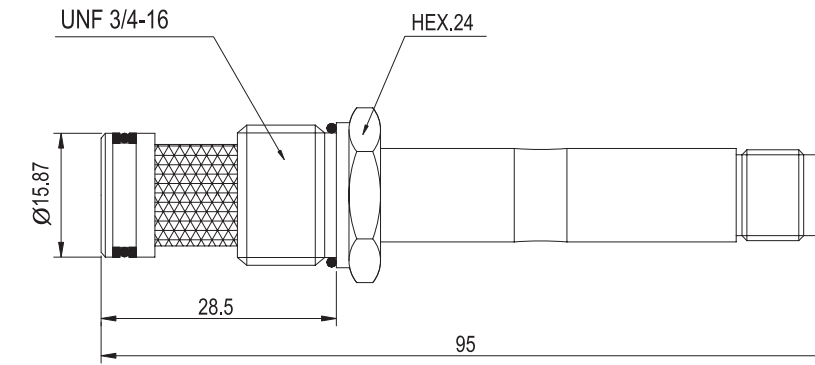
RATINGS

- External valve surfaces are qinc coated
- Max working pressure 210 bar
- Max flow 15~25 l/min

MATERIALS

All components are made in high quality steel.
The piston is hardened and ground.

DIMENSIONS



CAVITY

