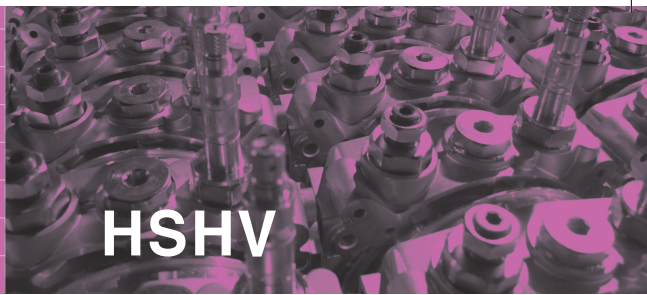




HSHV

SHUTTLE VALVE (LOGIC CHECK)

SHUTTLE VALVE (LOGIC CHECK)



HSHV

DESCRIPTION

Port size 1/2". Valve body made from steel. If P-Part drilled from the side into the cavity port 1/2" may be plugged. Port 1/2" may also be used to screw a pipe at hose fitting directly into it.

OPERATION

If P-port is pressurised oil flows to A-port through the check valve mounted in the poppet spool. Pressure drop over the check valve and area ratio P to A result in a force moving the poppet spool to its seat. T port is sealed off leakfree. If P-port is depressurised poppet spool will be pushed open by the pressure in A-port. Flow passes from A to T. The check valve in the poppet spool prevents leak to P-port.

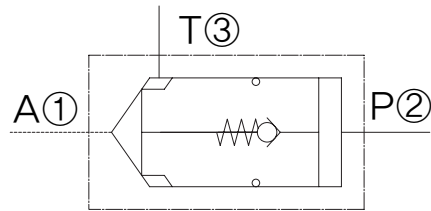
FEATURES

- Ⓐ Hardened seat for long life and low leakage.
- Ⓑ Compact size.
- Ⓒ Valves are burnished.

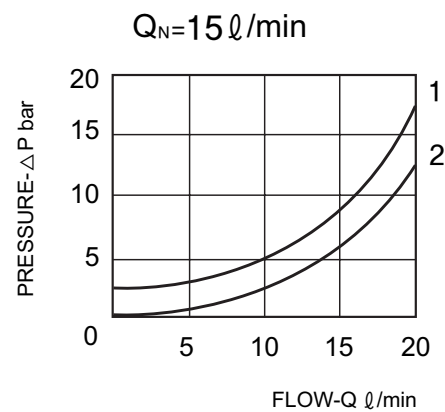
RATINGS

- Max working Pressure : 210 bar
- Tolerance on nominal flow $\pm 10\%$ (at 100 bar)

SYMBOL

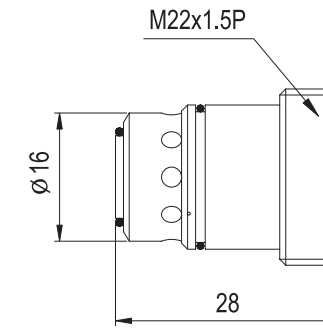


PERFORMANCE



1 Flow direction P → A
2 Flow direction P → T

DIMENSIONS



CAVITY

