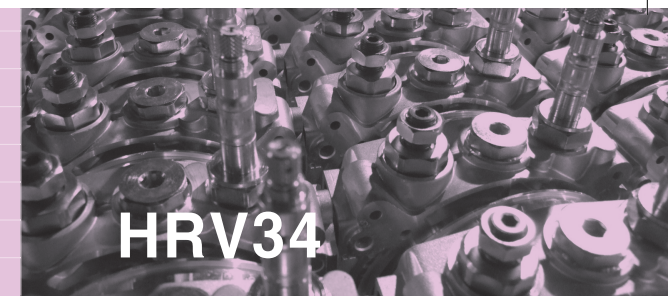




RELIEF VALVE (3/4)

RELIEF VALVE (3/4)



DESCRIPTION

A screw-in, Cartridge-style, direct-acting, poppet-type, hydraulic relief valve intended for lower flow circuits requiring low internal leakage.

OPERATION

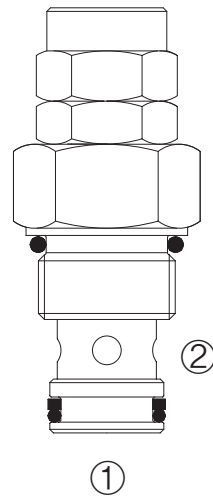
The valve blocks flow from ① to ② until sufficient pressure is present at ① to force the spring-opposed poppet from its seat.
For settings over 180 bar.

FEATURES

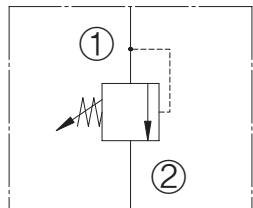
- Ⓐ Hardened seat for long life and low leakage.
- Ⓑ Optional bias springs for back-pressure application flexibility.
- Ⓒ Rapid response to pressure change.
- Ⓓ Compact size.

RATINGS

- Operating Pressure : 248 bar
- Flow : The performance Chart illustrates flow handing capacity at max. setting for each spring range option. Pressure rise will vary with spring (range) and with setting within range due to flow forces. Consult factory for specific flow characteristic values.
- Internal Leakage : 0.25 cc/min max. to of 75% of nominal setting
- Crack Pressure Defined : bar evident a 0.95 lpm attained
- Temperature : -40°C to 1200°C with standard Buna seals

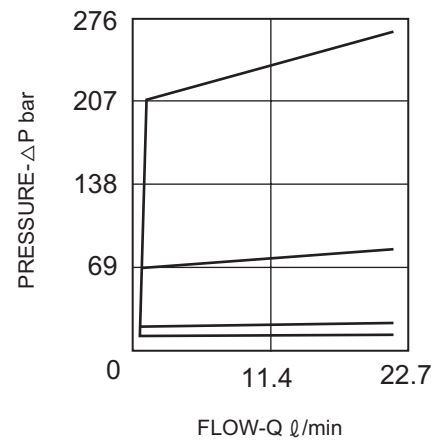


SYMBOL

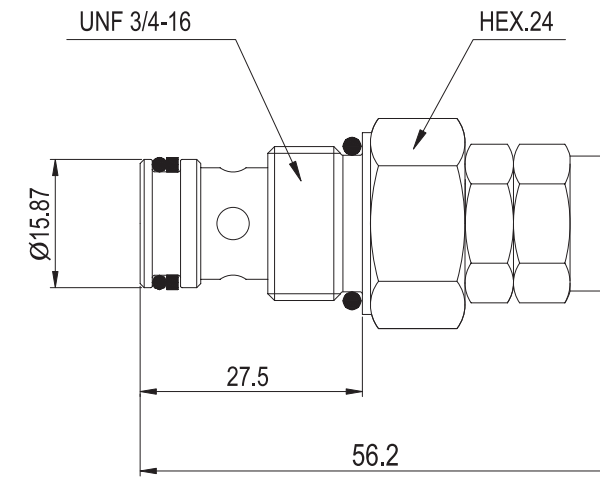


PERFORMANCE

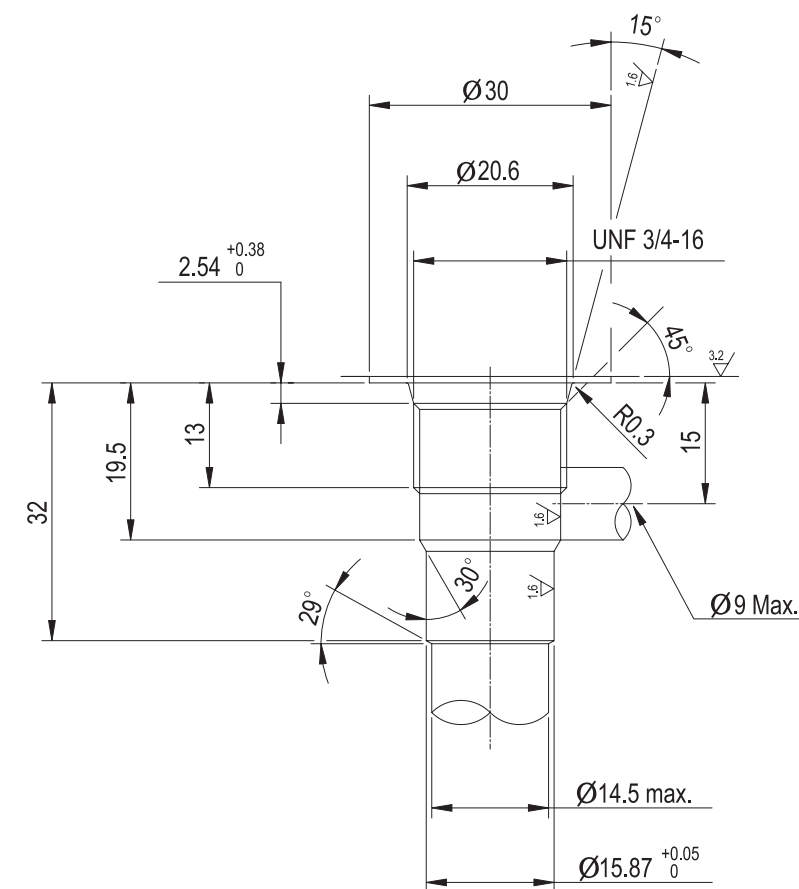
Flow Characteristic
32 cSt oil at 40°C

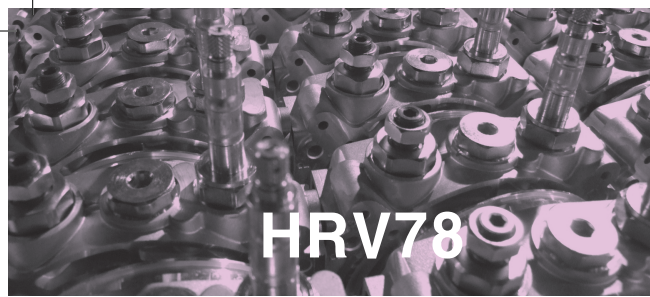


DIMENSIONS



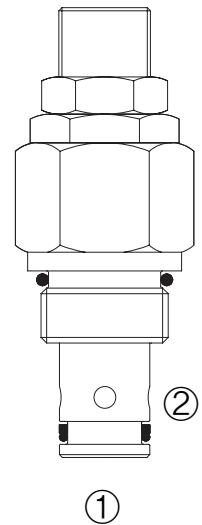
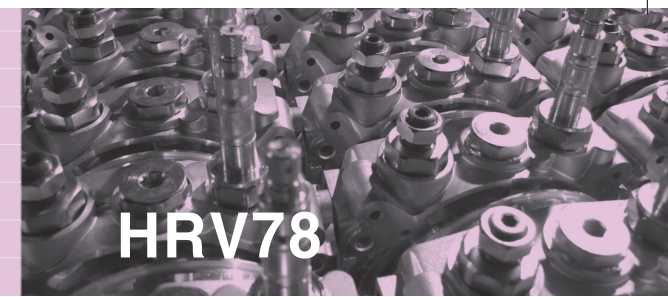
CAVITY





RELIEF VALVE (7/8)

RELIEF VALVE (7/8)



DESCRIPTION

A screw-in, cartridge-style, pilot-operated, spool-type hydraulic relief valve, intended for use as a pressure limiting device in demanding hydraulic circuits which require fast response and low hysteresis.

OPERATION

The valve blocks flow from ① to ② until sufficient pressure is present at ① to force the piloting relief off its seat, allowing the main (second stage) spool to shift, opening ① to ②.

The cartridge offers smooth transition in response to load changes in demanding hydraulic circuits.

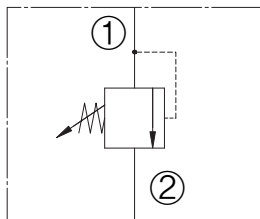
FEATURES

- Ⓐ Adjustments cannot be vacked out of the valve.
- Ⓑ Adjustments prohibit springs from going solid.
- Ⓒ Hardened spool and cage for long life.
- Ⓓ Optional spring range to 210 bar
- Ⓔ Fast, smooth response to pressure surges.

RATINGS

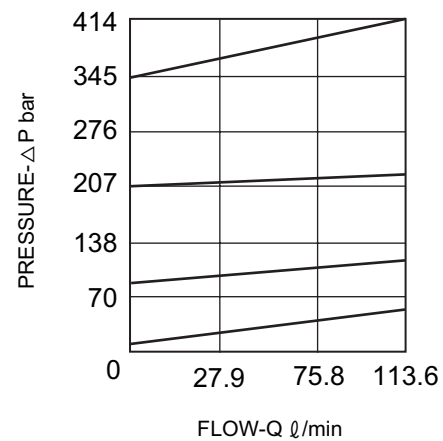
- Operating Pressure : 240 bar
- Flow : The performance Chart illustrates flow handing capacity at max. setting for each spring range option. Pressure rise will vary with spring (range) and with setting within range due to flow forces. Consult factory for specific flow characteristic values.
- Internal Leakage : 115 cc/min max. to of 85% of nominal setting
- Crack Pressure Defined : bar evident a 7.6 lpm attained
- Temperature : -40°C to 120°C with standard Buna seals

SYMBOL

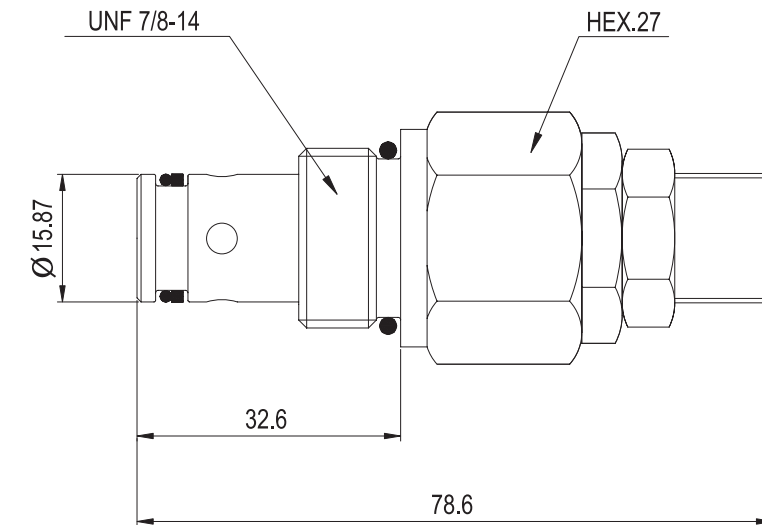


PERFORMANCE

Flow Characteristic
32 cSt oil at 40°C



DIMENSIONS



CAVITY

