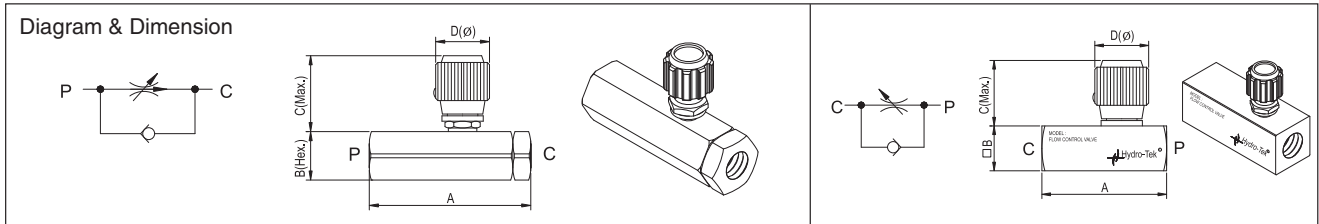
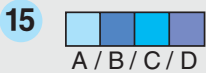


### (Others) Compensated adjustable throttle valve & Flow control valve

A	Code	Compensated adjustable throttle valve P			Flow control valve F		
B	Code	400	600	800	400	600	800
	Port	PT 1/4"	PT3/8"	PT1/2"	PT1/4"	PT3/8"	PT1/2"
	Flow (Max.)	1 ~ 10 l/min	1 ~ 18 l/min	1 ~ 33 l/min	20 l/min	55 l/min	110 l/min
	Pressure (Max.)	250bar	250bar	250bar	350bar	350bar	350bar
	A (mm)	90	90	107	65	70	87
	B (mm)	27	27	36	20	25	32
	C (mm)	38	38	41	34	45	44
	D (mm)	24	24	30	24	30	30

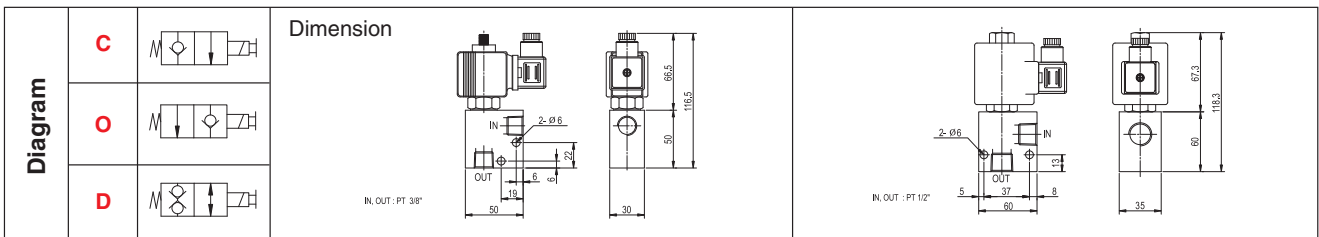


**Note** Please contact Hydro-Tek for different thread specification of 'P' ports.



### (Others) Solenoid valve

A	Code	Solenoid valve V							
B	Code	C			O		D		
	Type	Normally closed			Normally open		Double lock		
C	Code	1	2	3	4	5	6	7	
	Voltage	DC12V	DC24V	AC 110V	AC 220V	AC 110V RAC	AC 220V RAC	AC 24V	
D	Code	1				3			
	Specification	Cavity	08	Pressure (Max.)	250bar	Flow (Max.)	40 l/min	Cavity	10
								Pressure (Max.)	350bar



### (Others) Burst valve

A	Code	Burst valve B	
B	Code	600	800
	Port	PT 3/8	PT1/2
	Flow (Max.)	50l/min	80l/min
	A (mm)	23	25
	B (mm)	10.5	12
	C (mm)	12.5	15

Diagram & Dimension

