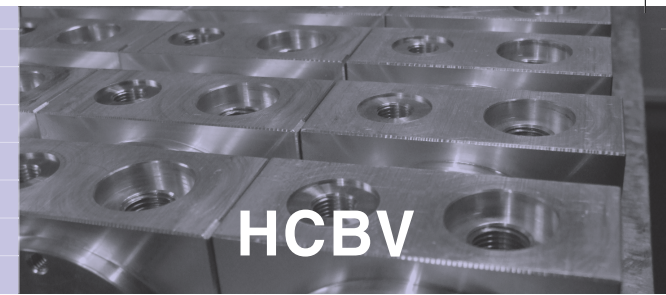


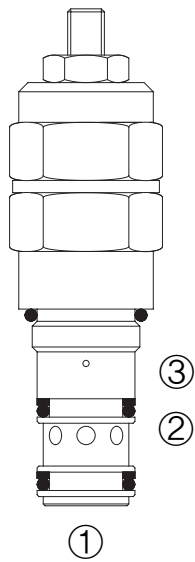
HCBV

COUNTERBALANCE VALVE

COUNTERBALANCE VALVE



HCBV



DESCRIPTION

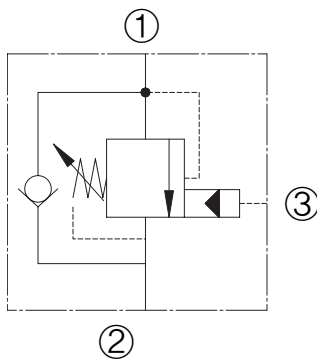
This valve is a direct acting, screw in cartridge style, poppet type, adjustable, pilot assisted, hydraulic counterbalance valve.

OPERATION

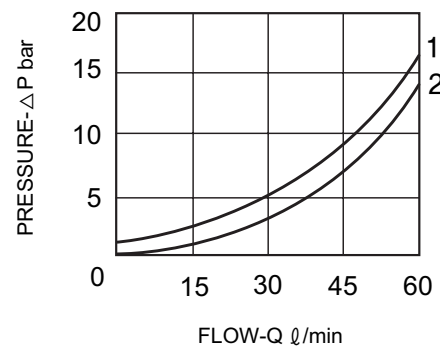
This valve controls moving load and preventing it from running ahead of the pump, locking the load in any position, it also provides static overload and thermal expansion protection.

The valve is a modulating device that allows free flow from port ② to port ① and then blocks reverse flow until a pilot pressure inversely proportional to the load pressure is sensed at port ③ modulating flow from port ① to port ②.

SYMBOL



PERFORMANCE



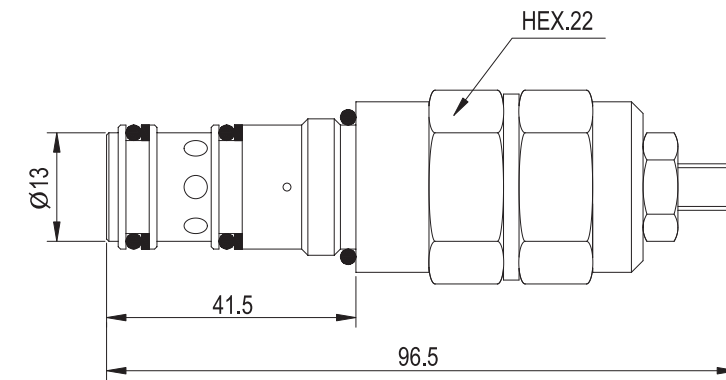
FEATURES

- Ⓐ Leakproof screw adjustment.
- Ⓑ Adjustable screw can not be backed out of the valve.
- Ⓒ Overset protection - spring can not go solid.

RATINGS

- Max Pressure : 315 bar
- Max Flow : 20 l/min
- Max Tightening Torque : 40 Nm

DIMENSIONS



CAVITY

