



HBRV

## BURST VALVE

## BURST VALVE



HBRV

### DESCRIPTION

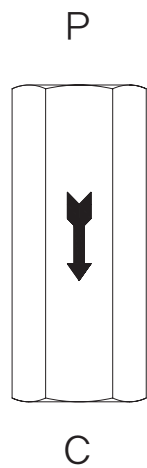
These valves can block flow when the lowering speed exceeds preset value as it might happen in case of hose failure. They should ideally be screwed directly into the actuator outlet port. Sealing parts are superfinished and enable to lock the load in the position where the actuator is in the moment of hose failure.

### OPERATION

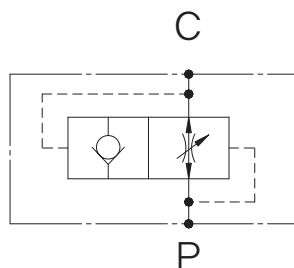
These valves can be supplied, in request, with an orifice on the disc, allowing an emergency lowering of the load. It is recommended to fit a flow regulator valve downstream the hose burst valve, at the end of flexible hose, to control the lowering speed at the nominal value.

### FEATURES

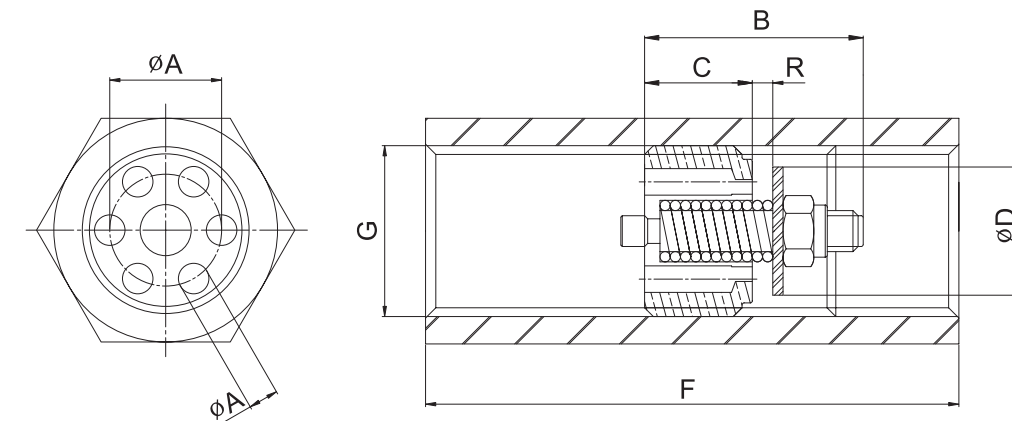
- Max Pressure : 350 bar
- Max Flow : see diagram



### SYMBOL



### DIMENSIONS

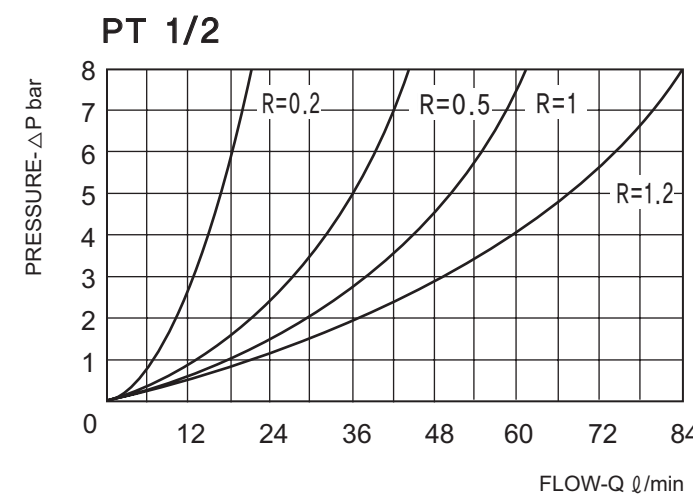
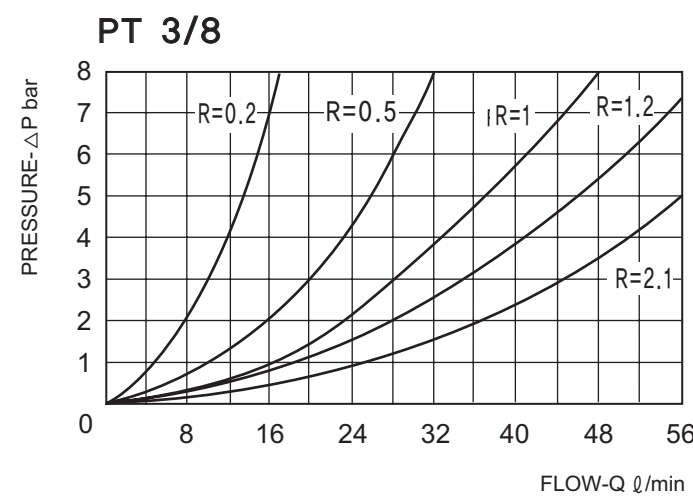
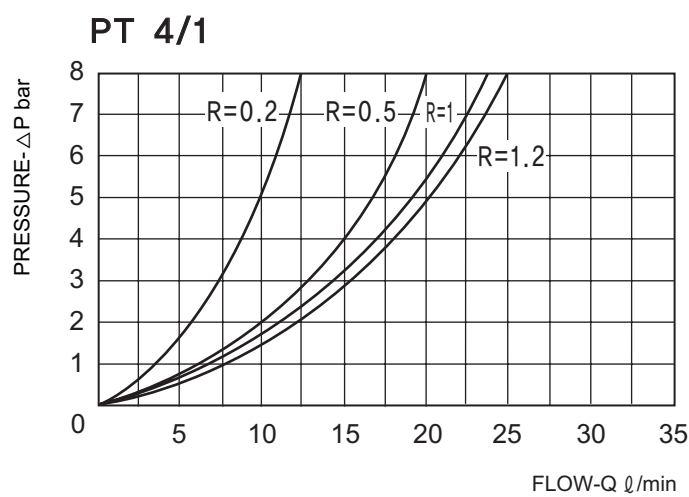


### RATINGS

| G      | A    | B    | C    | D    | E   | F  |
|--------|------|------|------|------|-----|----|
| PT 1/4 | 8.5  | 17.5 | 8    | 9.5  | 2.4 | 48 |
| PT 3/8 | 10.5 | 23   | 10.5 | 12.5 | 3.5 | 52 |
| PT 1/2 | 13   | 25   | 12   | 15   | 4.5 | 60 |

| G      | Installation torque | Min flow (l/min) | Max flow (l/min) | Hex. | Weight Kg |
|--------|---------------------|------------------|------------------|------|-----------|
| PT 1/4 | 2 Nm                | 4                | 25               | 5.5  | 0.005     |
| PT 3/8 | 3 Nm                | 6.3              | 50               | 5.5  | 0.01      |
| PT 1/2 | 4 Nm                | 16               | 80               | 7    | 0.02      |

### PERFORMANCE



### MATERIALS

Screw and disc are made in high quality steel, sealing surfaces are lapped.